



Intelligent Mold Monitor

Terminator of Traditional Mold Monitor | Fourth Generation Intelligent Mold Monitor



XIAMEN BOSHIYUAN MACHINE VISION TECHNOLOGY CO.,LTD



▶ Application Scenario

▶ Product Upgrading

▶ Application Area

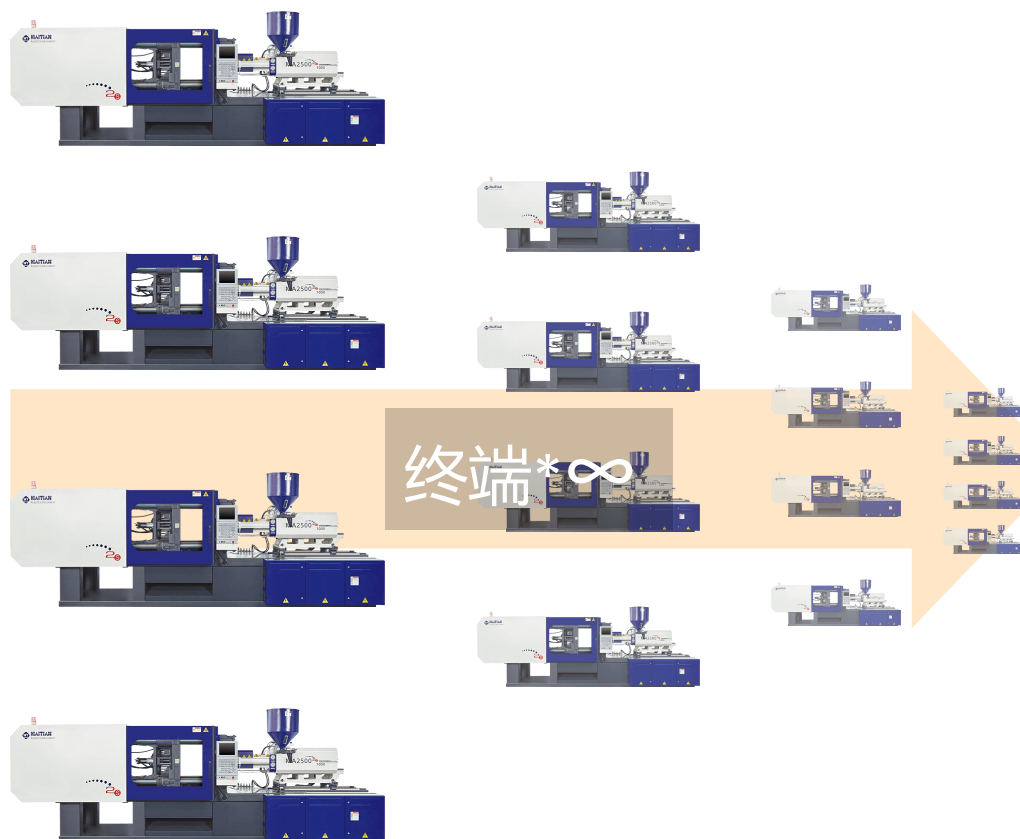
▶ Configuration

1.Application Scenario



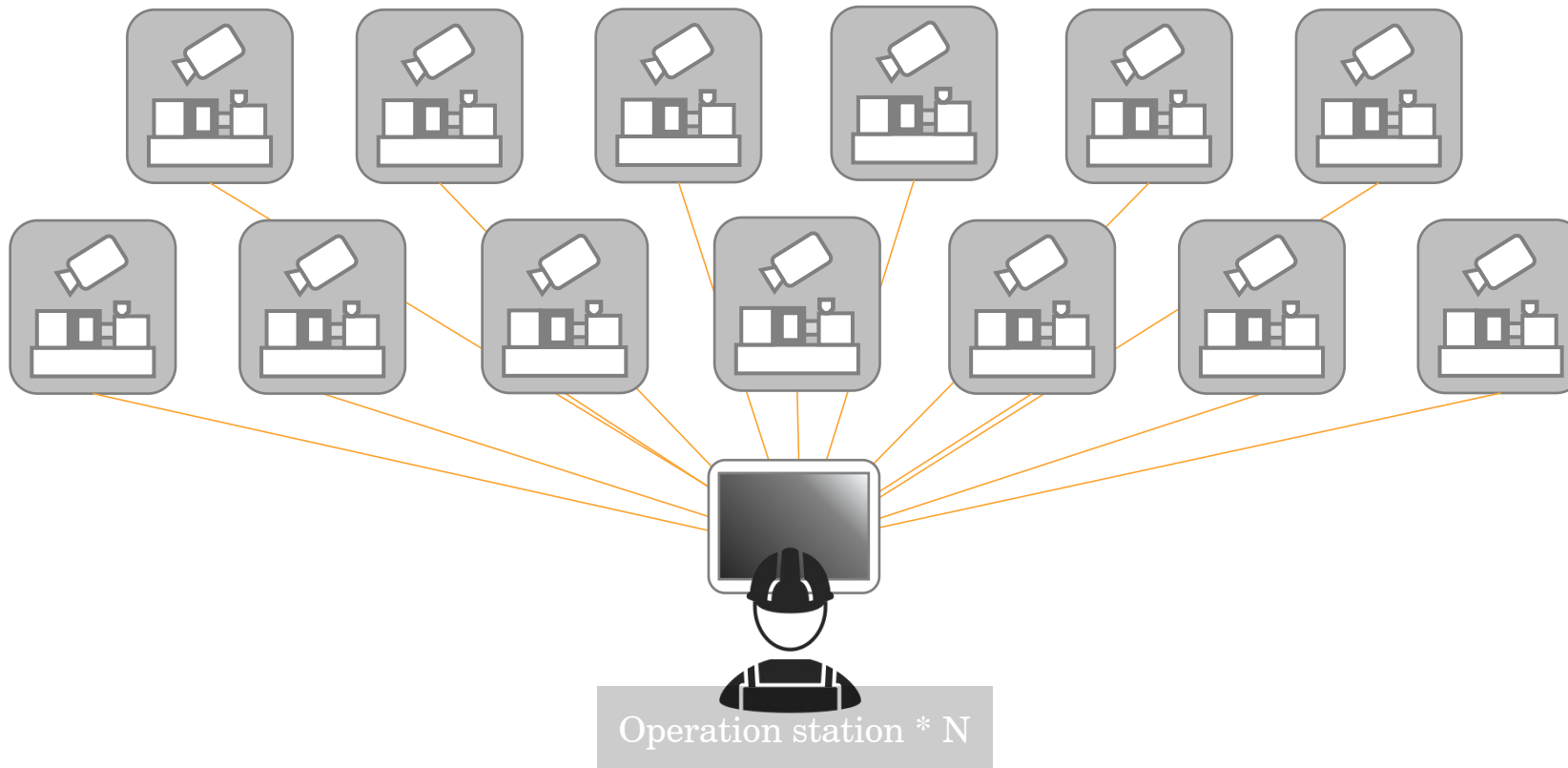
2. Product Upgrade - Hardware Costs

	Third generation mold monitor	Fourth generation intelligent mold monitor
Hardware cost	One injection molding machine is matched with a set of screen host. Purchase multiple units, with a hardware cost of 1 * N	No host or screen design, procurement cost is 80% of the old model Dozens of terminal devices share a mobile terminal (shell optional tablet/phone) for display and control



2. Product Upgrade - Labor Costs

	Third generation mold monitor	Fourth generation intelligent mold monitor
Labor costs	Mold monitoring and control require dedicated personnel to be on duty, and each person can supervise ≤ 5 devices	Real time upload of monitoring data, one person can monitor N detection stations, greatly reducing labor costs



2. Product Upgrade - Establish MES System

Establish MES system

Third generation mold monitor

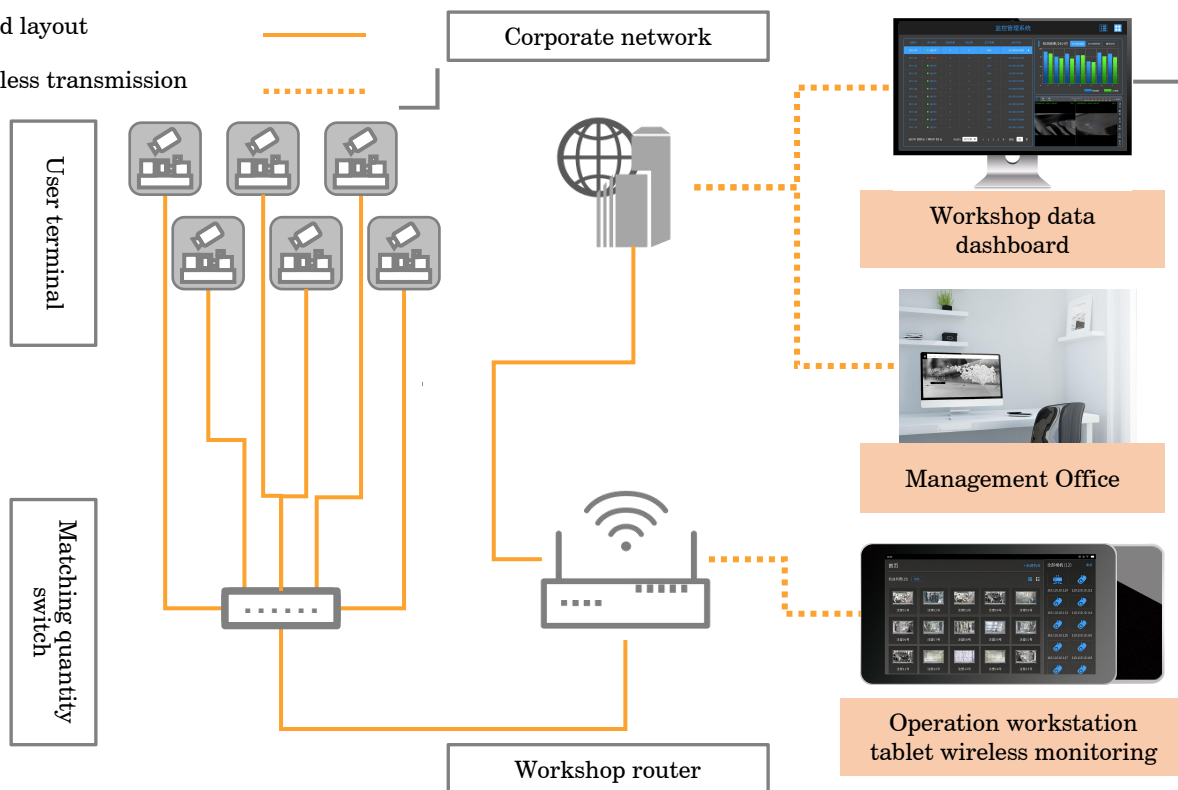
Unable to create and connect to the Mesh system

Fourth generation intelligent mold monitor

Based on wired network layout, terminal connectivity within the workshop can collect real-time monitoring data of injection molding machines through the fourth generation mold monitor. Real time production data and historical statistical data can be projected to the workshop data dashboard and the company management office, achieving the establishment of a production workshop MES system and upgrading the intelligent workshop.

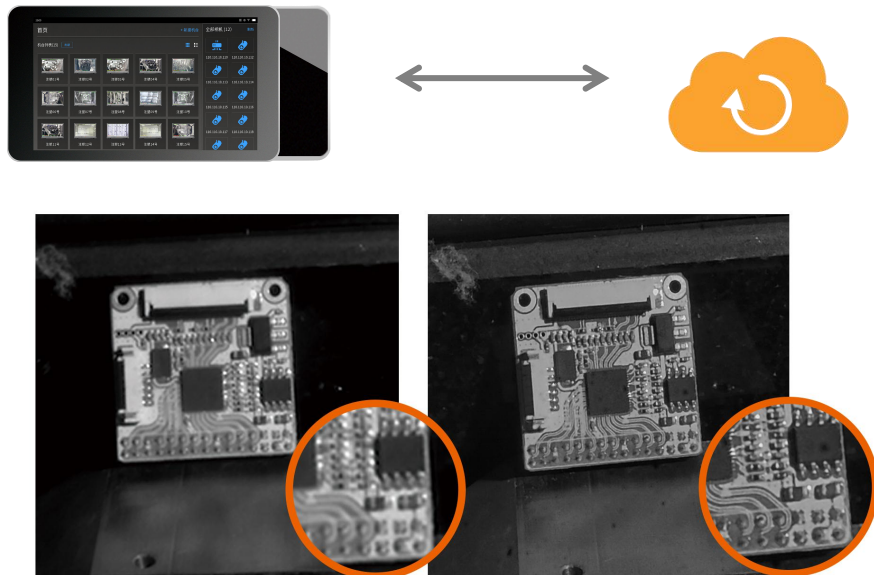
Wired layout

Wireless transmission



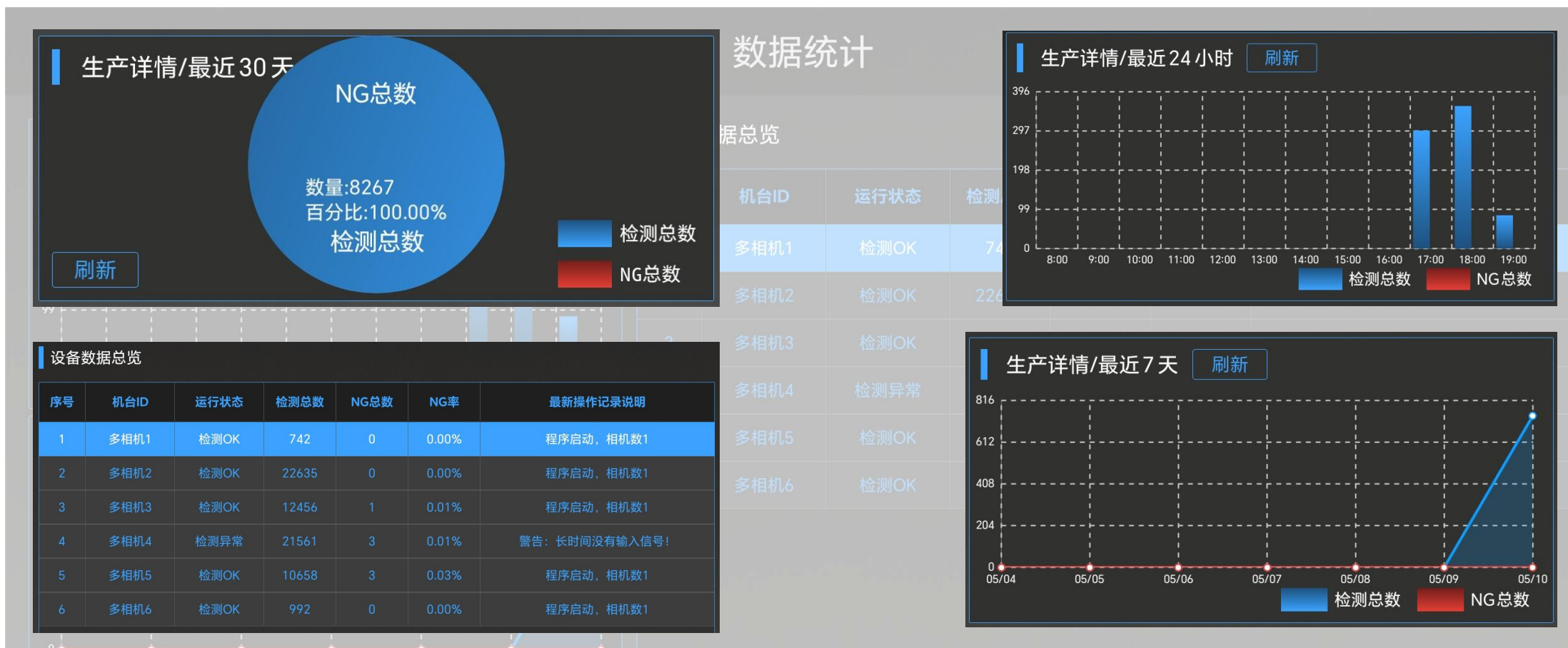
2. Product Upgrade - Production Efficiency

	Third generation mold monitor	Fourth generation intelligent mold monitor
Debugging and upgrading methods	Program issues and system upgrades require engineers to handle them on-site, with latency	Can connect to the internet for online backend debugging and online upgrade
Imaging effect	Traditional industrial cameras have poor imaging clarity in specific low light environments, making it easier to misjudge alarms	Adopting self-developed cameras, further improving imaging resolution and effectively reducing misjudgment rates
Convenience of operation	The operating terminal needs to be wired and fixed next to the mold. In case of mold abnormalities, the staff should monitor and handle them at the terminal	The operating end is a wireless tablet/phone, and wireless mold monitoring and terminal operation can be carried out through the mobile app within the local area network

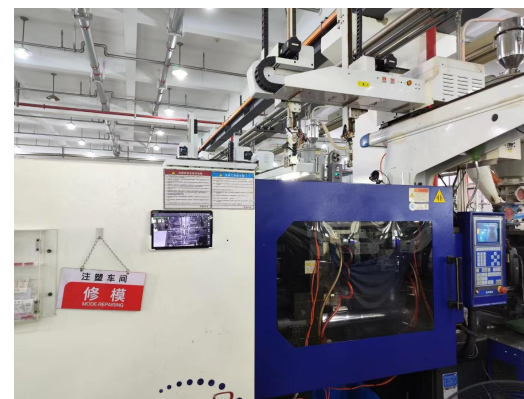
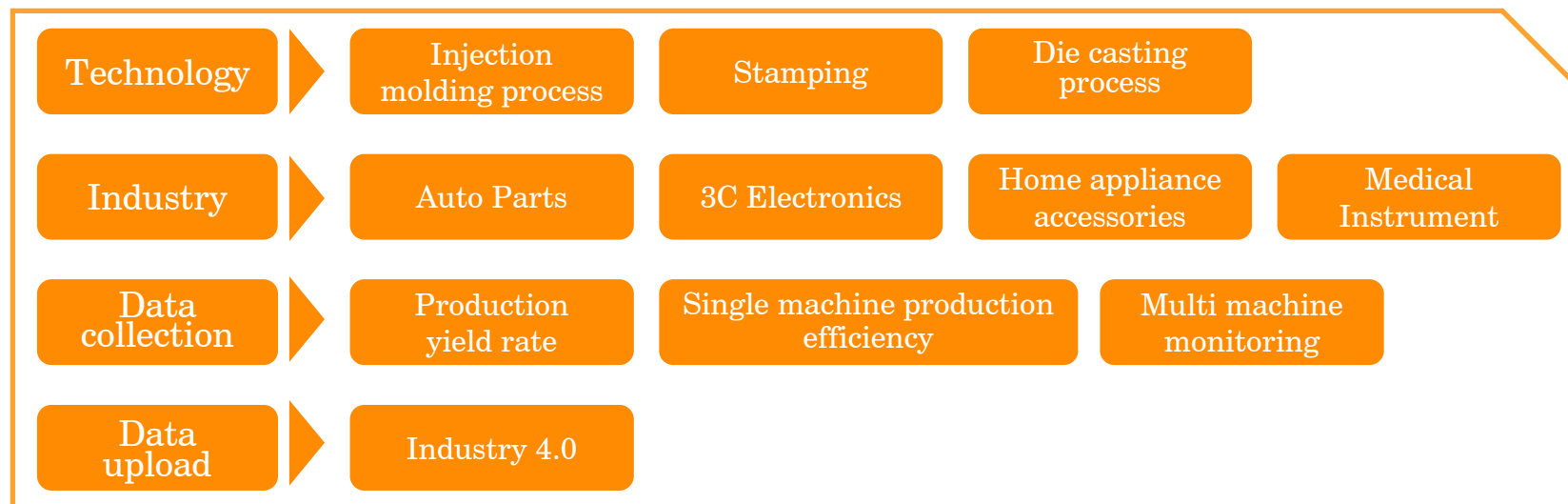


2. Product Upgrade - Data Management

	Third generation mold monitor	Fourth generation intelligent mold monitor
Data management	No detailed data statistics function	Real time upload of data, visualization and visualization of data, creating a more intuitive new way of digital collaborative management



3. Application field



4. Equipment configuration

The configuration will be updated irregularly, and shall be subject to the technical agreement or quotation.

Hardware parameters of the fourth generation mold monitor		Fourth generation mold protection configuration list	Brand	Specifications	Unit
CPU	Arm chip	Ipad	Lenovo/Honor (optional)	10.1 inches	Tower
Resolution	1920*1080	AP panel/router	TP LINK (optional)	kilomega	Individual
Frame rate	30FPS frame rate	IO power communication box	Boshiyuan Customization	PA-1017 (4+1 network)	Individual
Shot	Wide angle to mid focus (12-36mm) lens	IO communication line	Boshiyuan Customization	IL-1240	Strip
Sensor	Stacked CMOS sensor	IO communication box power cord	Boshiyuan Customization	PL-302	Strip
Available tablet hardware parameters (example)		Smart camera	Boshiyuan Customization	BC-432	Individual
CPU	Tianji 8100	High flexible network cable	Boshiyuan Customization	Super five categories	Strip
Resolution	2560*1600	Industrial lens	Boshiyuan Customization	BLE-801	Individual
Screen size	12.1 inches	Complete set of magnetic seats	Boshiyuan Customization	MB-905	Cover
System	Magic OS 7.0	Infrared light source	Boshiyuan Customization	BL-210I	Individual
Battery capacity	10050mAh (typical value)	Infrared light source power cord	Boshiyuan Customization	PL-L02	Strip
		Relay	Omron	MY2N (with base)	Individual
		Instructions	Boshiyuan Customization	Paper printing	Individual

Thanks You!



厦门博视源机器视觉技术有限公司

XIAMEN BOSHIYUAN MACHINE VISION TECHNOLOGY CO.,LTD

Xiamen Factory: No.13-17 Yaoshan Road, Xinglin, Jimei District, Xiamen City, Fujian Province

Wuxi Factory: Building 4, No. 15 Haoshan South Road, Xishan District, Wuxi City, Jiangsu Province

Sales hotline: 0592-6077810